



i9

Multipurpose Color Ultrasound System



IMAGING SYSTEMS



i9

Multipurpose Color ultrasound system



19" LED monitor with 210° rotation angle



Additional 10.4" touch screen monitor

A Premium System Built Into the Future

i9 is a versatile premium ultrasound imaging system that provides a comprehensive diagnostic solution to our valuable users in all types of clinical environments.

Its wide range of clinical applications includes AB, OB/GYN, cardiology, general imaging, shared service, MSK, and many other specialized applications.



Ergonomic Design

- 19 Inch high definition LED monitor with 210° rotation angle
- Additional 10.4 inch touch screen for better user Interface
- Integrated gel warmer
- Control panel with adjustable height and angle
- Four wheel locks for improved safety
- Latest alphanumeric keyboard designed for comfortable use



Expandable Platform

- 1 MHz -18 MHz operating frequency range
- THI (Tissue Harmonic Imaging)
- 2D Steer
- SRA (Speckle Reduction Algorithm)
- Universal Compound Imaging
- i-Image (intelligent image optimization)
- Curved Panoramic Imaging
- Auto IMT



2D Steer



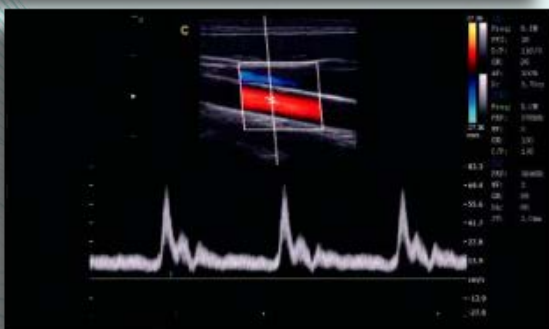
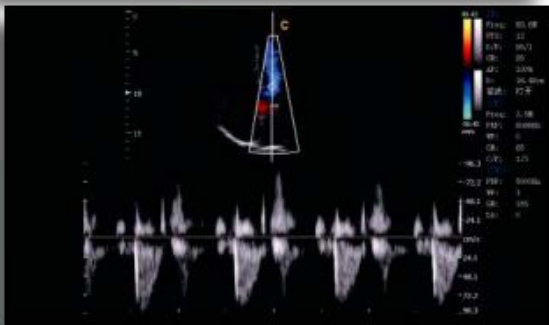
Elastography



Excellent Performance

i9 provides superior image quality with high diagnostic confidence using advanced probe and system technology

- Excellent B&W images with fine resolution
- Beautiful color images with high frame rate and sensitivity
- Crisp Doppler spectral images with high SNR



Efficient Workflow

- With intelligent touch technology, you can be more efficient in your routine workflow
- Easyview™ for convenient review
- User-defined functions to fit your own work style
- Multiple output for quick data transfer (DICOM, HDMI, DVI, VIDEO, VGA)
- Streamlined workflow for easy exam completion

